

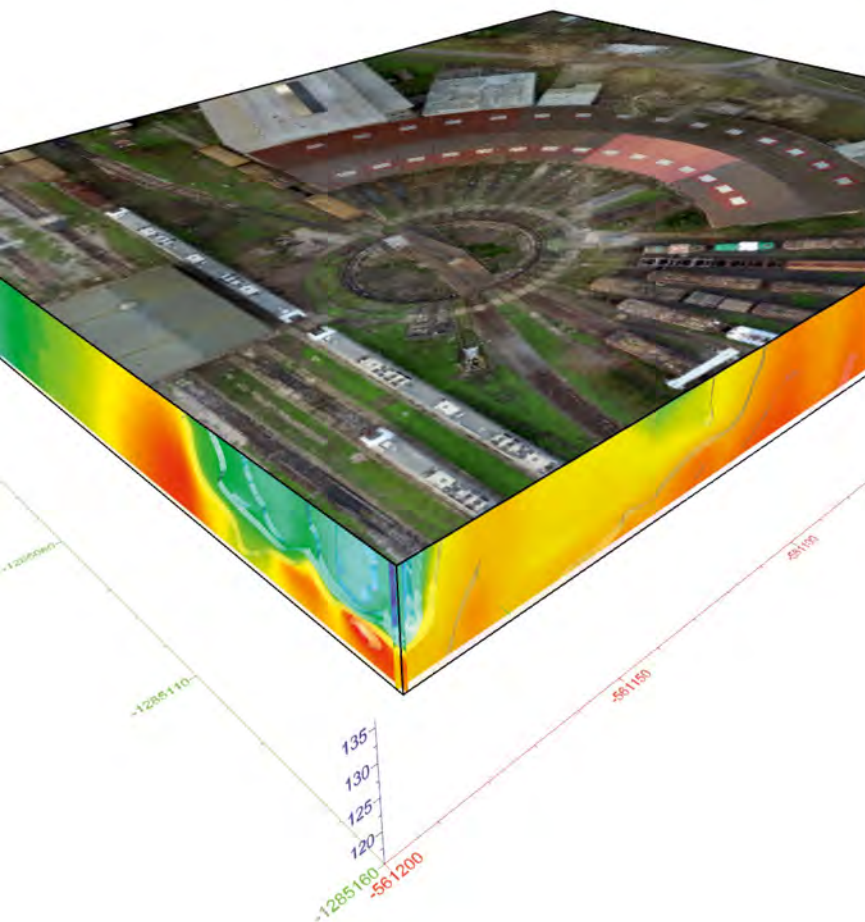
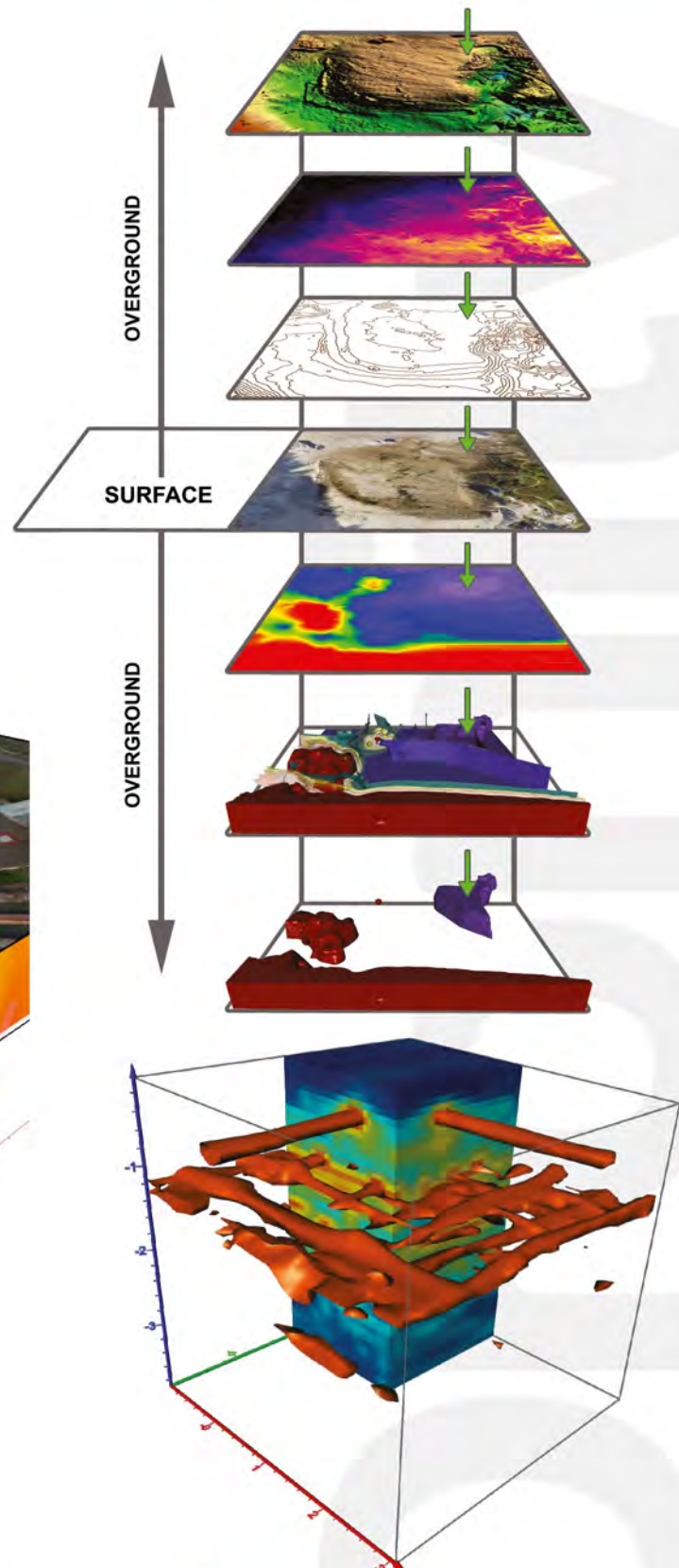
# IDENTIFICATION OF UNDERGROUND ENTITIES



DEVELOPER  
Inspector

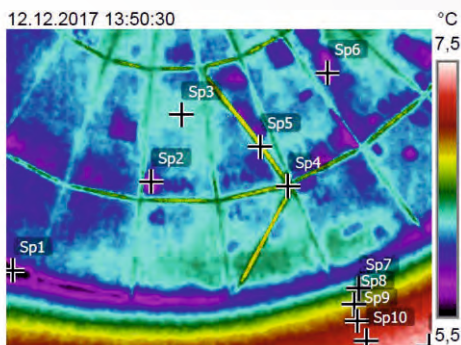
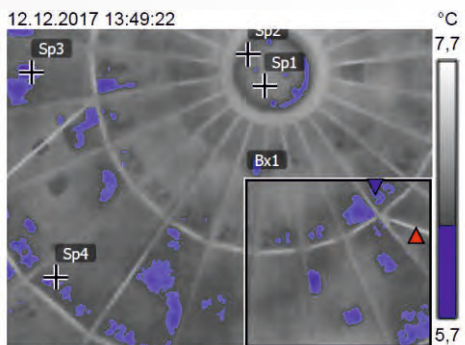


- Geophysical screening
- Tracing of engineering networks and identification of underground structures
- Volumetric calculation of heaps and other underground objects
- Landfill and surrounding research



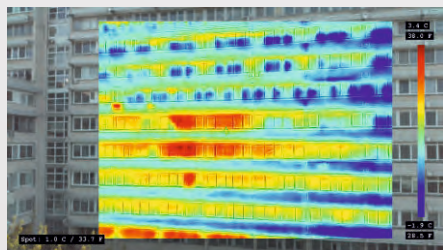
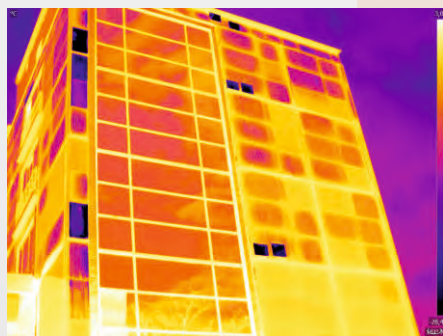
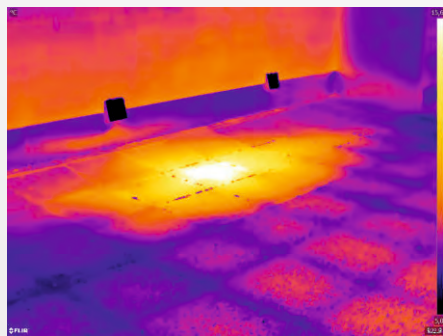


# AERIAL AND GROUND THERMOINSPECTIONS

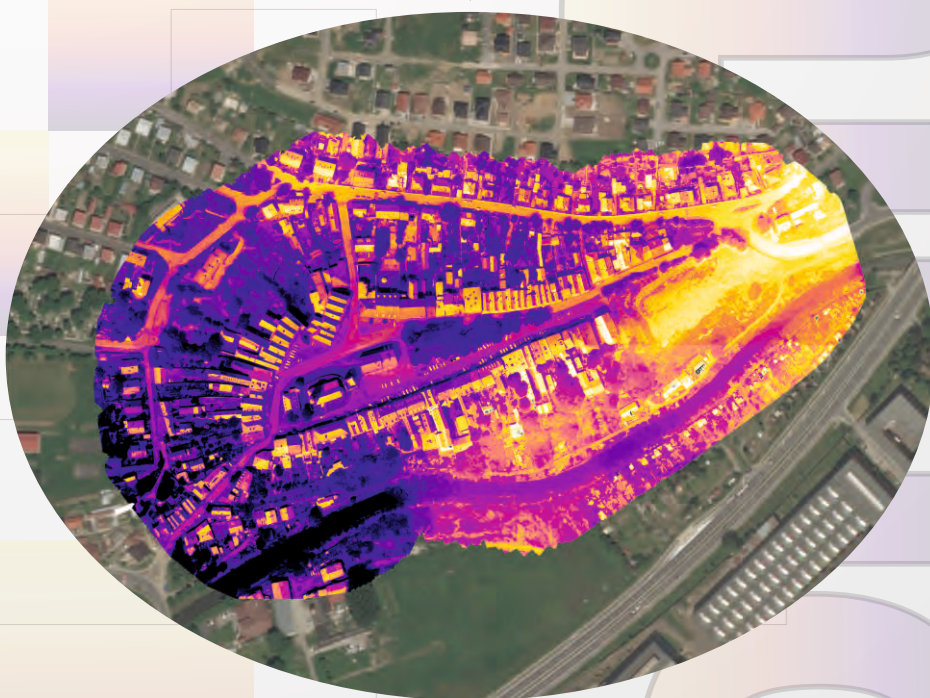


Identification of potential spots of weakened sheathing of underground reservoir tank

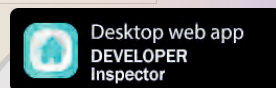
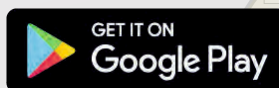
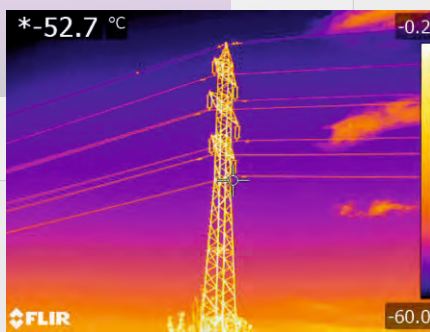
Heat leak and thermal bridges



Thermal variations of urban areas during the day



Power lines inspections





# FOR PROJECT ENGINEERS 3D OBJECT MANAGEMENT + BIM



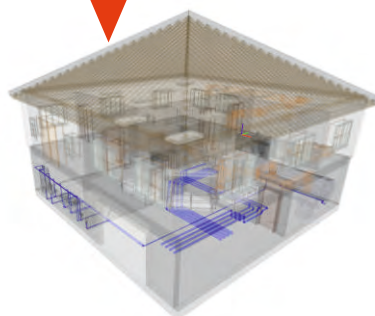
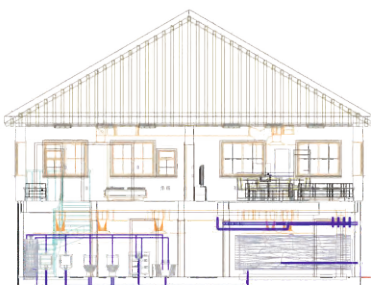
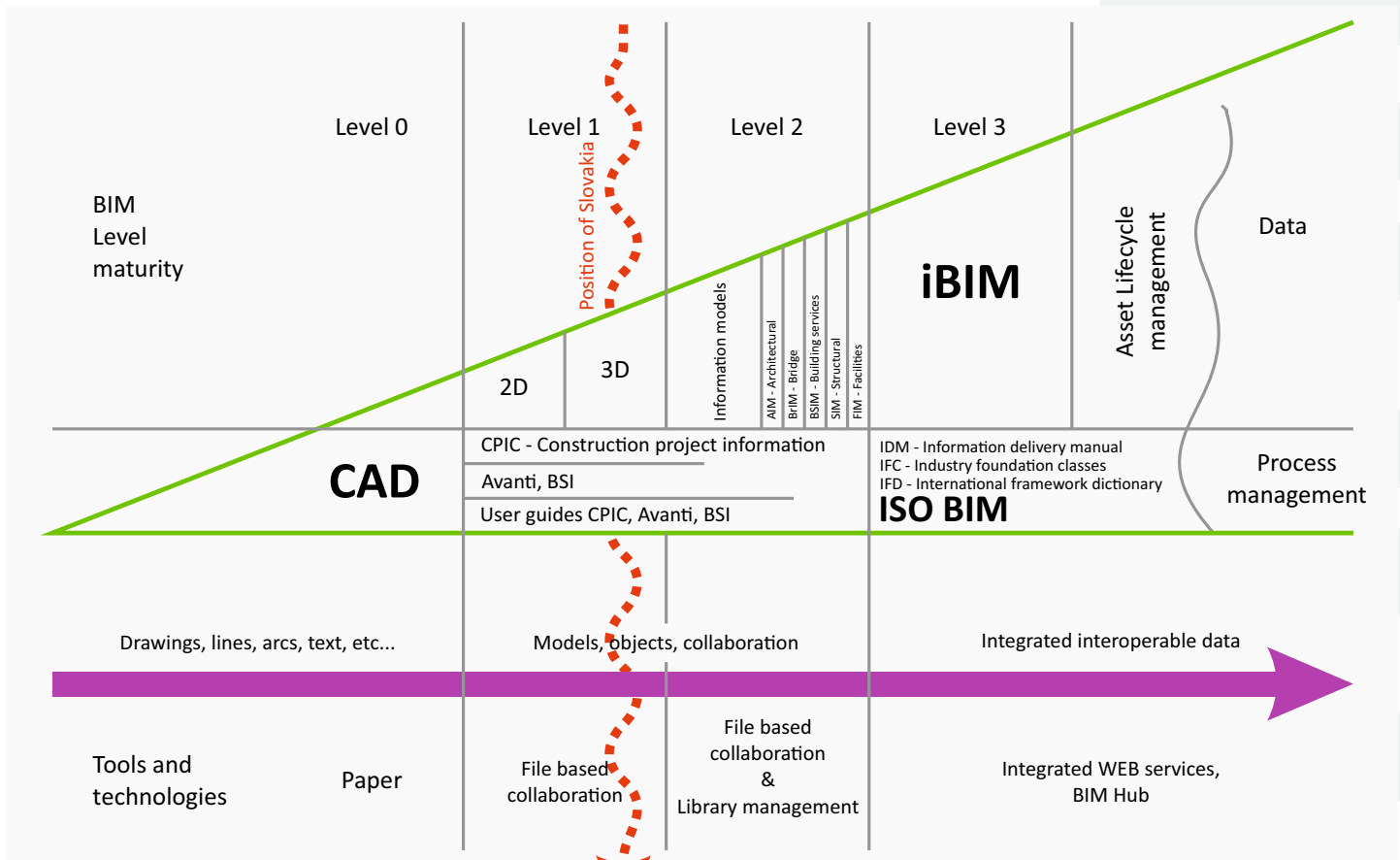
**DEVELOPER  
Inspector**



- Aerial and terrestrial scanning
- Creation of project documentation
- 3D visualisation, wire models, BIM
- Details for lightning studies



**We offer data in IFC format**



We implement the data as necessary to:

- AutoCAD
- Revit
- ArchiCAD
- Sketchup



# FOR CITIES AND MUNICIPALITIES

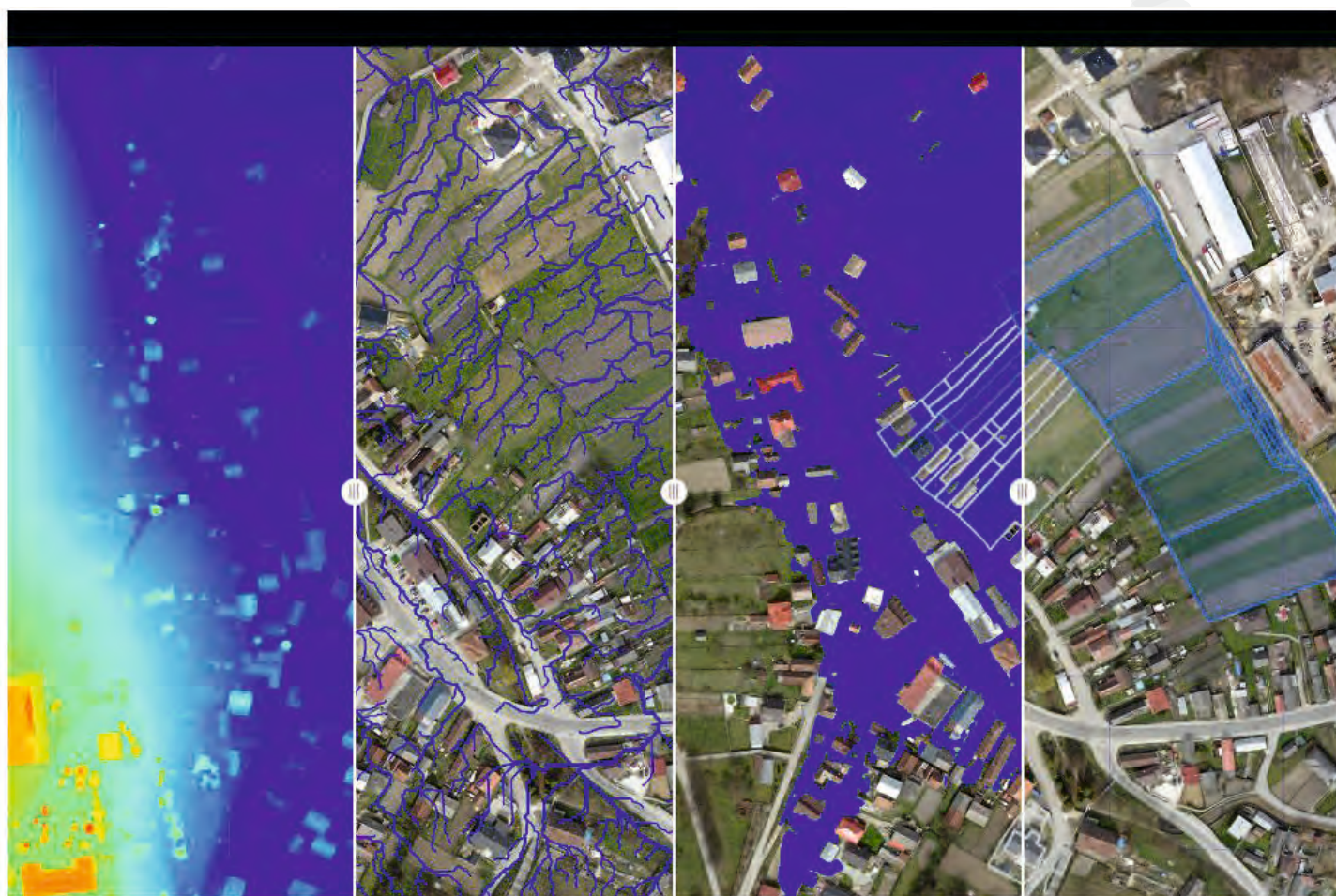
## Smart help for cities and villages



SMART CITY  
Inspector



- Hydrological analyzes - drainage network and river basin districts
- Coordinates for rescue systems
- Determination of heat loss of buildings and climate change monitoring in towns / villages

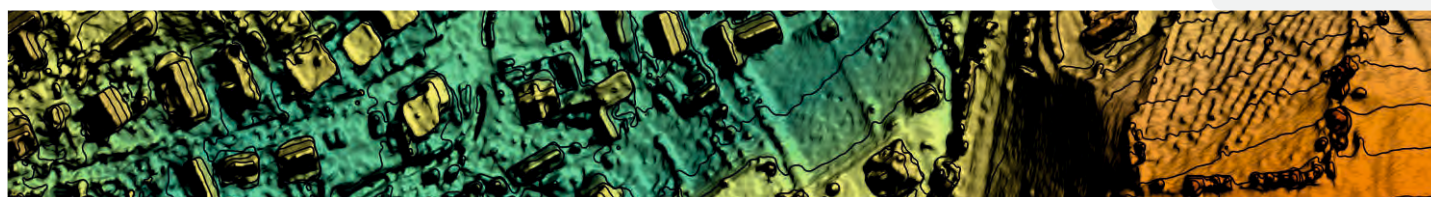


Digital surface  
model

Drainage  
network

Flooding  
area

Cadastral  
area



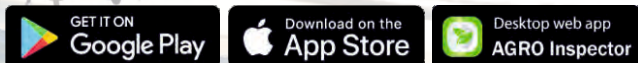


# FOR AGRONOMISTS

## Health and damage of crops



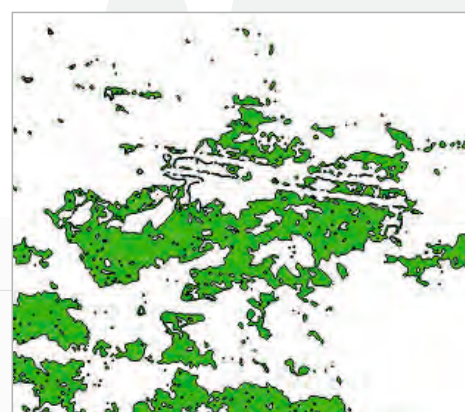
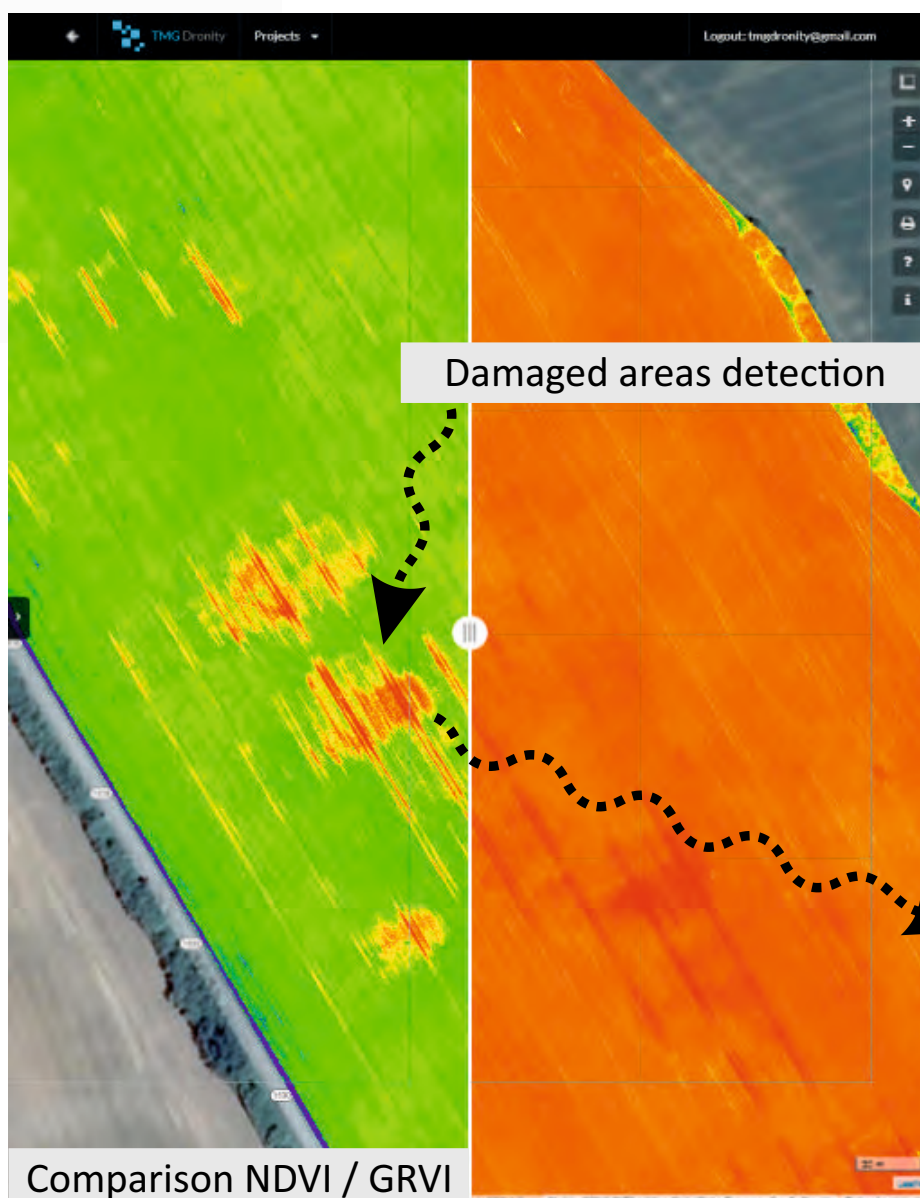
AGRO  
Inspector



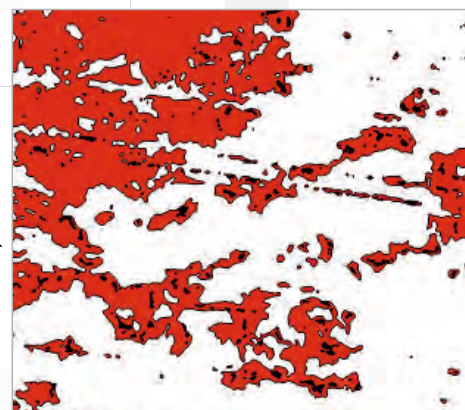
- Vitality of crops and plants
- Detection of damaged areas
- Optimisation of irrigation and fertilisation
- Vegetation index maps - NDVI, NDRE, GRVI
- Measurement of seeded areas
- Calculation of area of the individual degrees of lodging



Lodged wheat



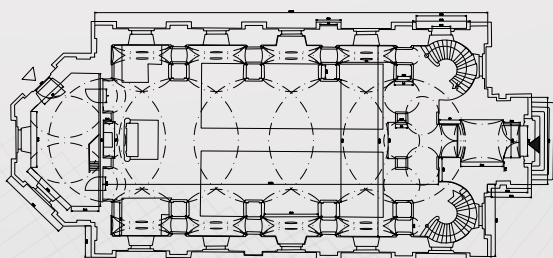
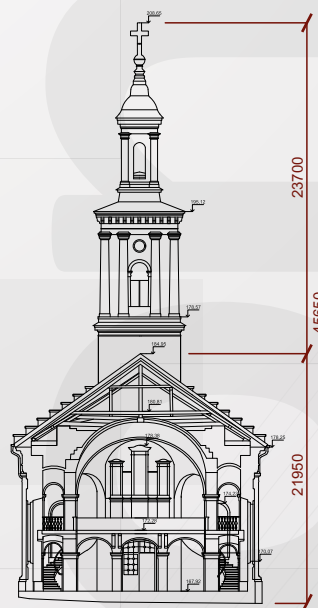
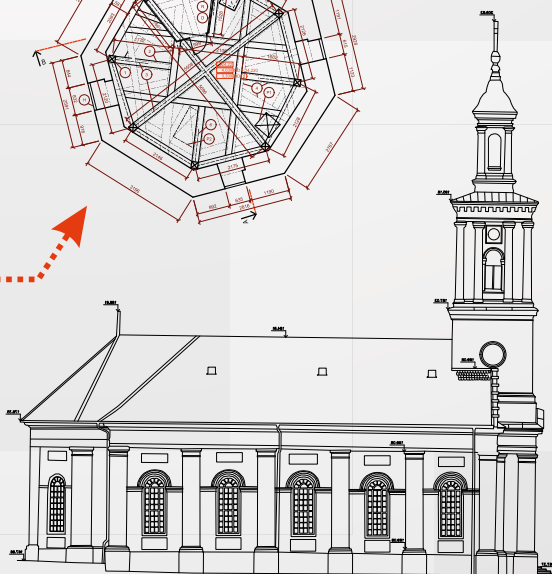
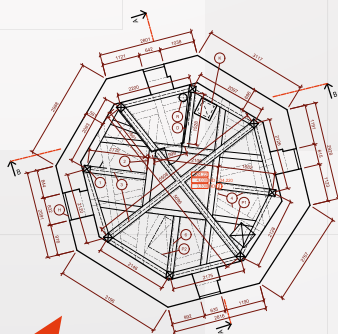
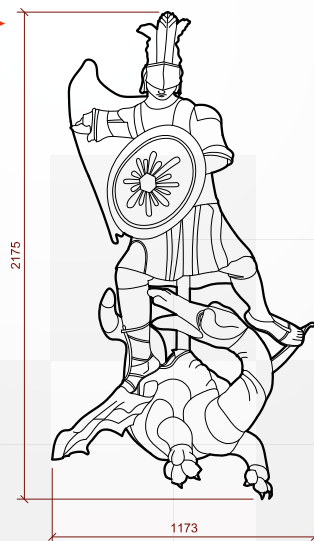
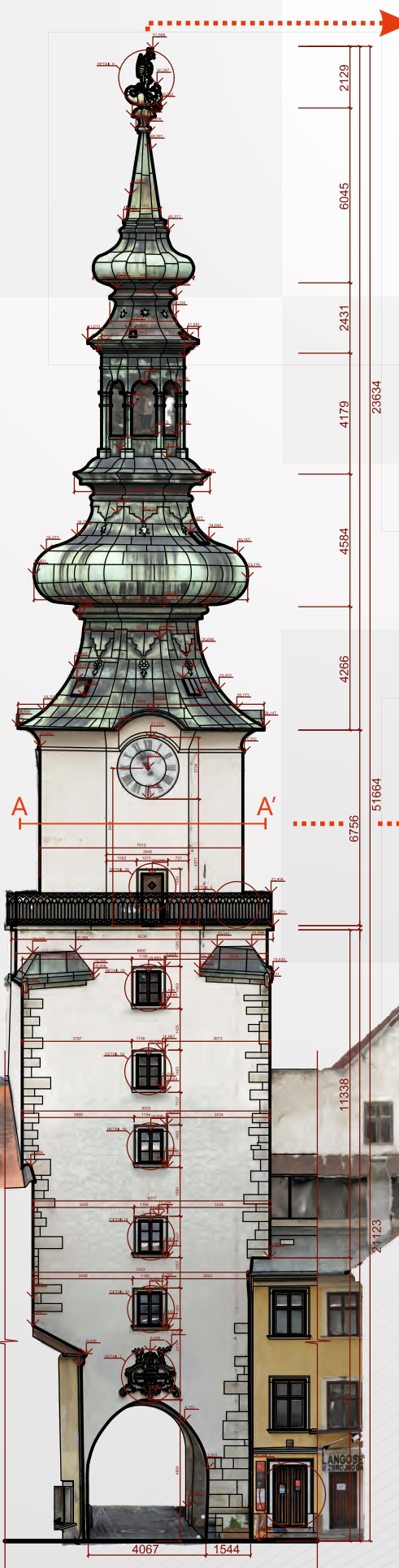
Lodging : 75 - 85°  
Area: 4034,43m<sup>2</sup>



Lodging: 0 - 10°  
Area: 9035,03m<sup>2</sup>



# PRECISE OBJECT MEASUREMENTS



- Aerial terrestrial scanning
- Ground terrestrial scanning
- 3D Modeling

## Creation of project documentation:

- Views
- Cross-sections
- Floor plans



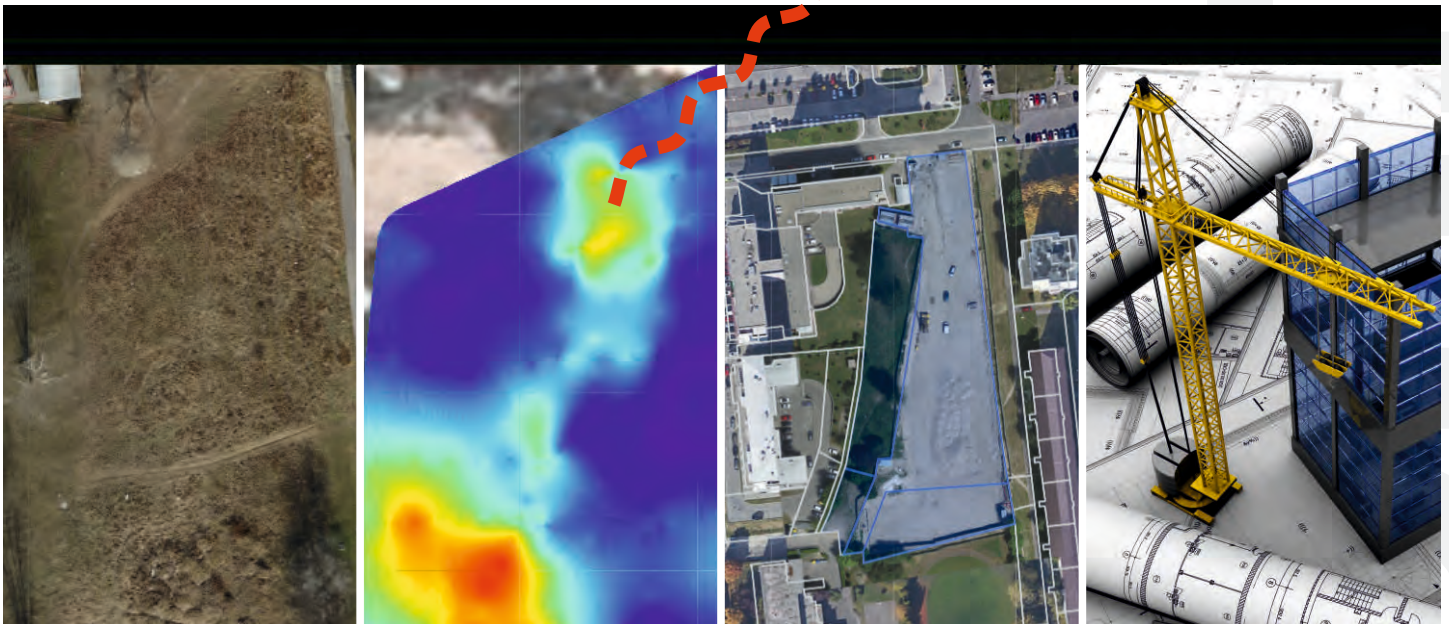
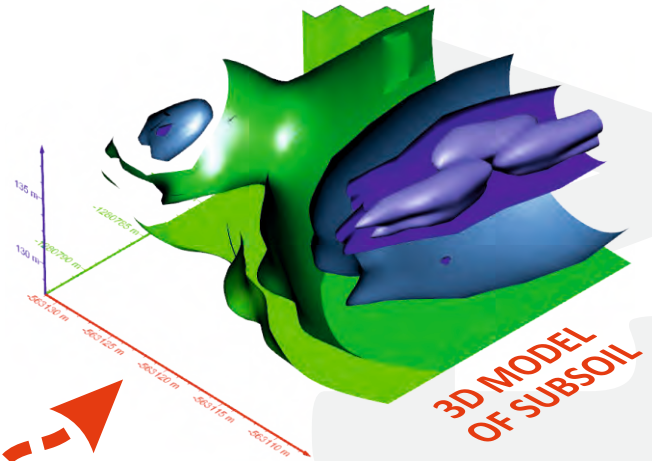
# GEOPHYSICAL MEASUREMENT FOR DEVELOPERS



DEVELOPER  
Inspector



- Detailed horizontal and vertical display of the rock environment - geological layers and structures
- Detection of presence and position of disturbing objects
- Direction of groundwater flow
- Interpretation of results in 2D / 3D

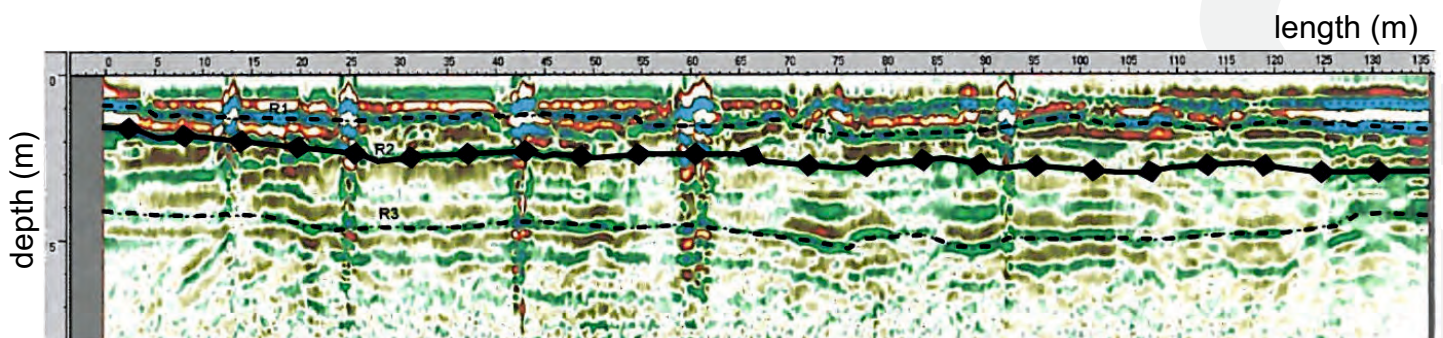


Land before construction

Geological survey of subsoil

Identification of damaged parcel

Construction monitoring - BIM





# Accurate monitoring of insurance claims in agro sector



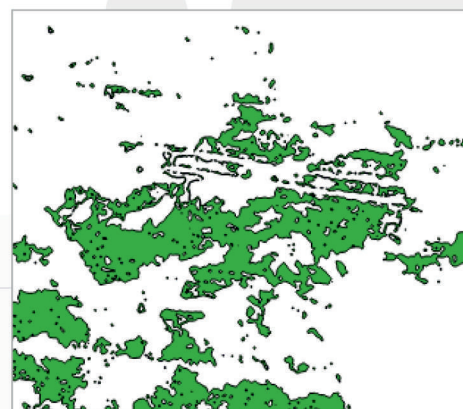
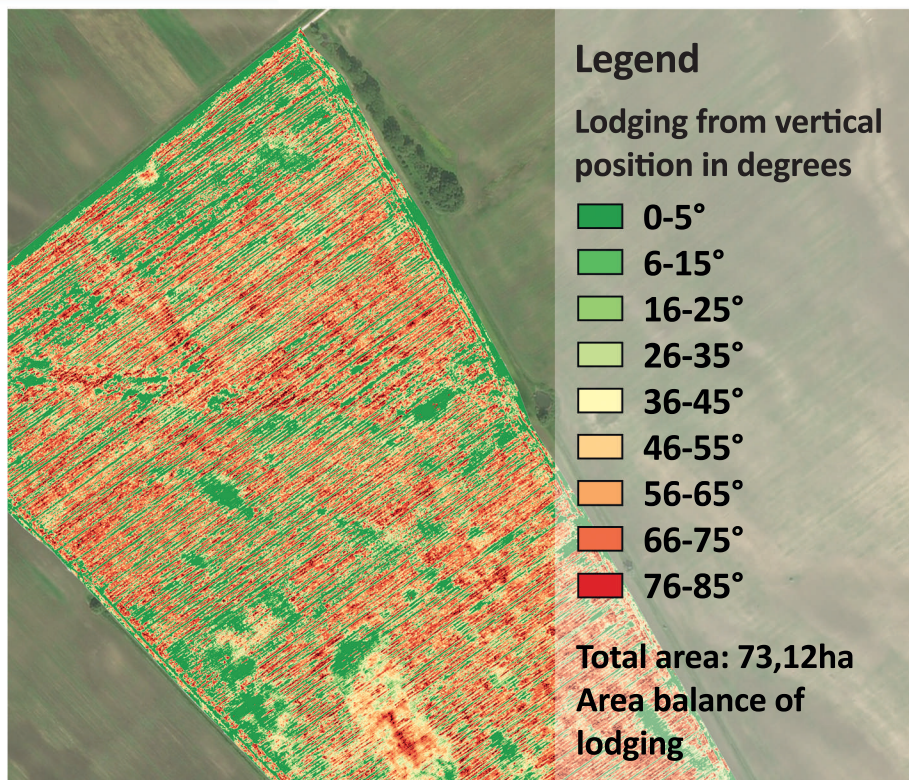
**AGRO  
Inspector**



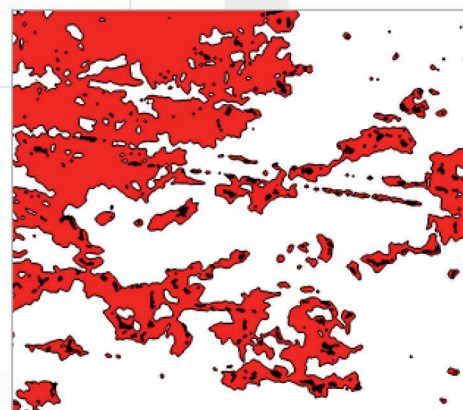
- Patented method for accurate monitoring of insurance events
- Precise calculation of crop damage area according to the plant lodging degree
- For various classification of lodging crops degree
- No need for the physical presence of an insurance company representative
- Fair indemnity
- Authorized assessment



Lodging wheat



Level of lodging: 50 - 85°  
Area: 4034,43 m<sup>2</sup>



Level of lodging: <10°  
Area: 9035,03 m<sup>2</sup>

Lodging from vertical position in degrees	Area [m <sup>2</sup> ]	Percentual representation from total area	Level of lodging
0-5	14886.59	1.10%	9
6-15	22873.69	1.69%	8
16-25	77717.51	5.73%	7
26-35	175243.28	12.92%	6
36-45	322124.50	23.75%	5
46-55	372363.10	27.46%	4
56-65	295735.13	21.81%	3
66-75	18215.01	1.34%	2
76-85	16017.60	1.18%	1
The ground	40902.29	3.02%	/
Total area	1356078.70	100%	